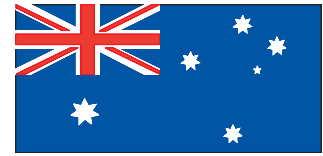
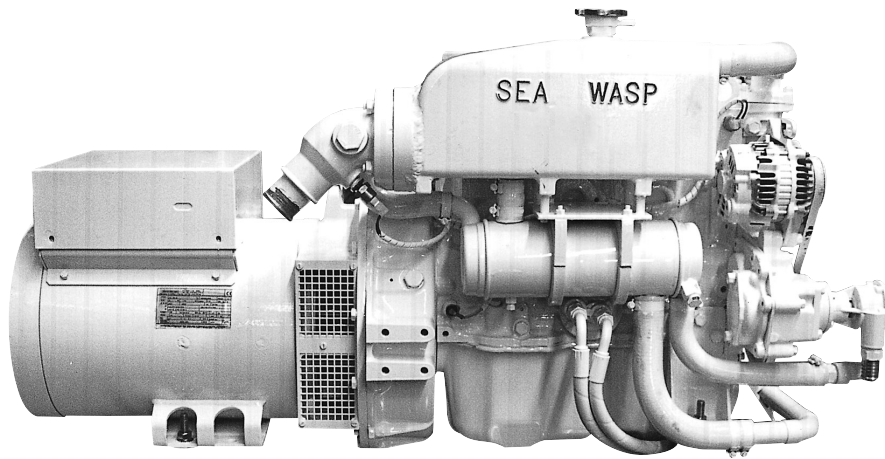


Generating power with pleasure

SEA WASP



*Proudly built in
Australia*



25.0 K.V.A. Model SW. 20000

Electrical Output

25.0 K.V.A. (20.0K.W. @ 0.8 Power Factor).

Speed

1500 R.P.M. - 50Hz (1800 R.P.M. - 60Hz).

Voltage Connections

- (1) Single (1) Phase, 240 Volt - 50Hz.
- (2) Three (3) Phase, 415/240 Volt - 50Hz.
- (3) Other voltages and frequencies available.

Generator Design

Brushless, drip proof construction, 4 pole revolving field, class 'F' Insulation.

Build Specifications.

C.E.I. 2-3, I.E.C. 34.1, U.D.E. 0530, BS 4999.

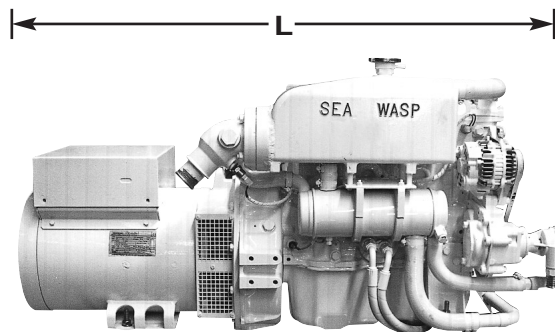
Generator Output	25.0 K.V.A. (20.0 K.W.)	H.P.(MAX)	30.9 H.P. @25°C
Generator Model	31.0 K.V.A. Brushless	Governing	Mechanical Flyweight
Engine Model	Mitsubishi S4S	Cooling System	Fresh Water Heat Exchanged
Engine Type	Water Cooled 4 Cycle Diesel		
No. of Cylinders	Four (4)		
Bore and Stroke	94 x 120mm		
Total Displacement	3331 C.C.		
Full Load Speed	1500 R.P.M.		
Fuel Injection Pump	Bosch inline		
Operating Angle	20°C in any direction (cont.)		

standard features

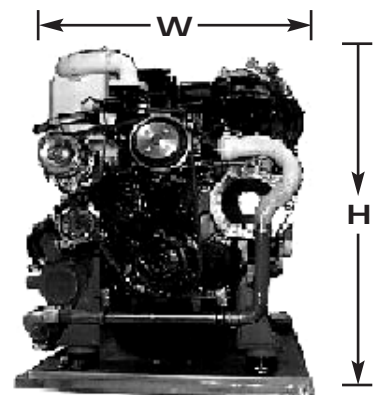
- 1 Fresh water cooled, Diesel engine.
- 2 Fresh water cooled manifold.
- 3 Wet exhaust (standard).
- 4 Dry exhaust (in lieu of wet).
- 5 3mm thick zinc steel tray base.
- 6 Anti-vibration mounts (4) fitted.
- 7 12 volt battery charging alternator.
- 8 12 volt D.C. control circuit breaker.
- 9 A.C. load circuit breaker.
- 10 Sump oil pump fitted.
- 11 Engine hours run meter.
- 12 Fuel filter (water separator).
- 13 Fuel lift pump (60cms lift).
- 14 High water temperature shutdown.
- 15 Low engine oil pressure shutdown.
- 16 High exhaust temperature shutdown.
- 17 Remote mounting starting module (standard).
- 18 Silenced models supplied with remote and local starting modules.
- 19 All connections outside sound shield.

optional equipment

- 1 Below waterline anti-syphon installation kit.
- 2 Water lock muffler.
- 3 12 volt D.C. electric fuel pump.



Open Model



Silenced Model

Dimensions - 3 phase

Model	Length L (mm)	Width W (mm)	Height H (mm)
Open Model	1470	680	790
Silenced Model	1490	700	825

Distributed by:

Manufactured by:

Sea Wasp Australia

PO Box 863, Wynnum Qld 4178
 Phone: (07) 3907 0708 Fax: (07) 3907 0709
www.seawasp.com.au

All dimensions, parameters & performances subject to change without further notice.