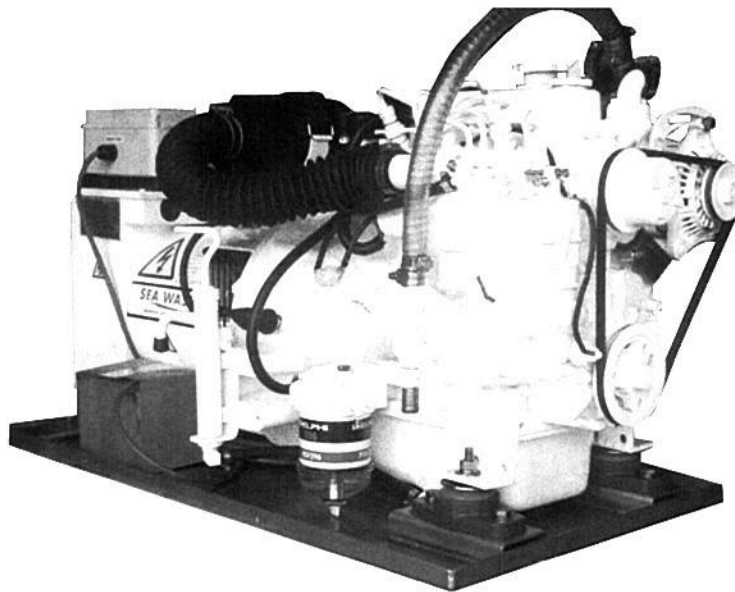


Generating power with pleasure

SEA WASP



*Proudly built in
Australia*



5.5 K.V.A. Model SW. 4400

Electrical Output

5.5 K.V.A. (4.4K.W. @ 0.8 Power Factor).

Speed

1500 R.P.M. - 50HZ (1800 R.P.M. - 60HZ).

Voltage Connections

(1) Single (1) Phase, 240 Volt - 50HZ.

Generator Design

Brushless, drip proof construction, 4 pole revolving field, class 'F' Insulation.

Build Specifications

C.E.I. 2-3, I.E.C. 34.1, U.D.E. 0530, BS 4999.

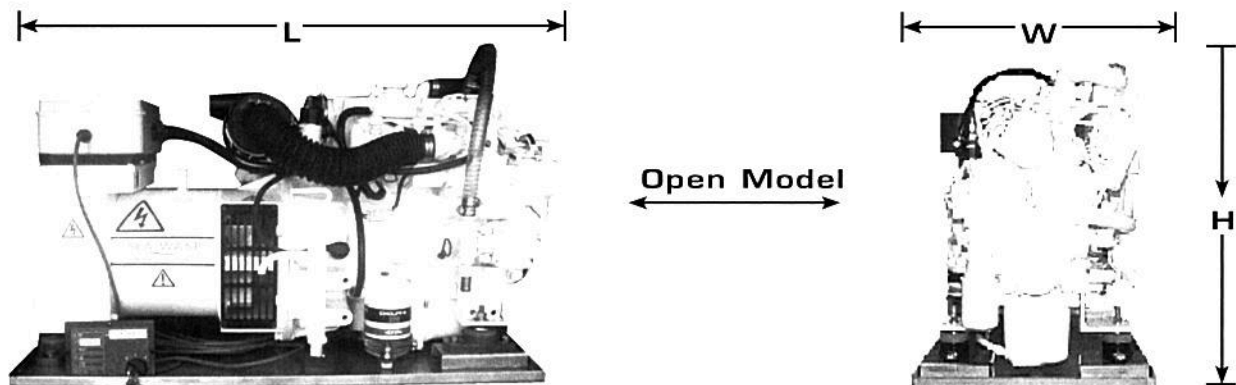
Generator Output	5.5 KVA (4.4 K.W.)	H.P. Continuous (DIN)	6.3 H.P. @25°C
Generator Model	6.5 KVA Brushless AVR Controlled	H.P. Standby	7.4 H.P. @25°C
Engine Model	Mitsubishi L3E	Governing	Mechanical Flyweight
Engine Type	Water Cooled 4 Cycle Diesel	Cooling System	Fresh Water Cooled
No. of Cylinders	Three (3)	Starting System	Electrical 12V 1.2 K.W.
Bore and Stroke	76 x 70 mm	Battery Charging	12Volt 40AMP
Total Displacement	952 C.C.	Lub. Oil Capacity	4.1 Litres
Full Load Speed	1500 R.P.M.	Fuel Consumption	1.5ltr / hr @ full load
Fuel Injection Pump	Bosch PFR	Noise Levels (Open)	69 dBA @ 5 metres
Operating Angle	20° in any direction (cont.)		

standard features

- 1 Fresh water cooled, Diesel engine.
- 2 Fresh water cooled manifold.
- 3 Wet exhaust (standard).
- 4 Dry exhaust (in lieu of wet).
- 5 3mm thick stainless steel tray base.
- 6 Anti-vibration mounts (4) fitted.
- 7 12 volt battery charging alternator.
- 8 12 volt D.C. control circuit breaker.
- 9 A.C. load circuit breaker.
- 10 Sump oil pump fitted.
- 11 Engine hours run meter.
- 12 Fuel filter (water separator).
- 13 Fuel lift pump (60cms lift).
- 14 High water temperature shutdown.
- 15 Low engine oil pressure shutdown.
- 16 High exhaust temperature shutdown.
- 17 Remote mounting starting module (standard).

optional equipment

- 1 Below waterline anti-siphon installation kit.
- 2 Water lock muffler.
- 3 Exhaust Gas Separator



Dimensions

Model	Length L (mm)	Width W (mm)	Height H (mm)	Weight Kg (wet)
SW4400 (5.5 K.V.A.)				
Open Model	950	500	585	180

Distributed by:

Manufactured by:

Sea Wasp Australia

PO Box 863, Wynnum Qld 4178

Phone: (07) 3907 0708 Fax: (07) 3907 0709

www.seawasp.com.au